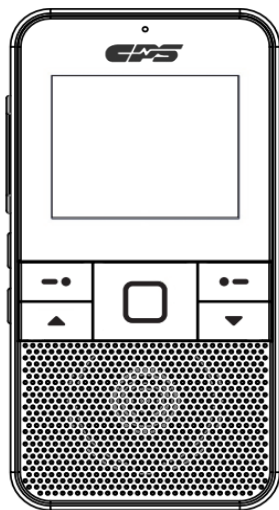




CP920

POC Transceiver USER MANUAL



1. GENERAL INFORMATION

1.1 【Introduction】

The 4G public network walkie-talkie allows global voice connectivity and communication with clear audio quality and no constraints of distance.

1.2 【Key Features】

- ✧ Linux operation system
- ✧ GSM/WCDMA/LTE network
- ✧ Global calling and instant response

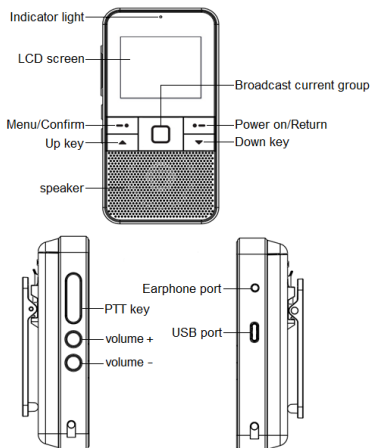
1.3 【Accessories】

- ✧ Adapter and charging cable
- ✧ Li-ion battery
- ✧ Belt clip
- ✧ User manual

1.4 【Optional】

- ✧ External speaker/microphone

2. CONTROLS AND INDICATORS



3. INSTALLING ACCESSORIES

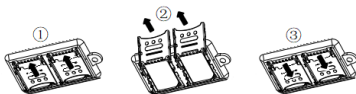
1) Uninstalling Battery Cover

- ① Slide rightwards the battery latch, which is above the upper edge of the Battery cover
- ② Push the battery cover downwards, and you will hear a crisp sound
- ③ Remove the cover



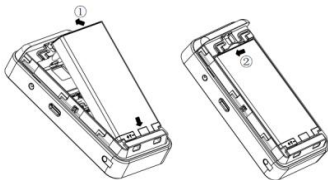
2) Installing SIM Card

- ① Slide forwards the SIM card cover
- ② Lift the cover, and input a SIM card
- ③ Put down the cover, and slide it downwards until it is fastened



3) Installing Battery

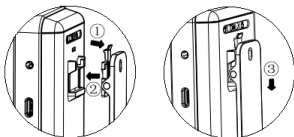
- ① Align the lower end of the battery, having the signs "+" and "-", with the slots at the lower end of the main unit, and then push the upper part of the battery into the battery slot, and you will hear a crisp sound.
- ② Put back the battery cover



3. INSTALLING ACCESSORIES

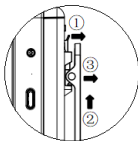
4) Installing Belt Clip

- ① Press the belt clip bracket flat
- ② Put the raised rib on the battery cover into the notch on the bracket
- ③ Slide the belt clip downwards until you hear a crisp sound



5) Uninstalling Belt Clip

- ① Lift upwards the spring handle of the belt clip bracket, so that it goes out from the slot
- ② Slide the belt clip upwards
- ③ Until it goes out of the slot



4. CHARGING THE BATTERY

- ① Plug the adapter into an electric socket.
- ② The USB TYPE-C cable is used to connect the power adapter and radio jack.
- ③ Ensure the connection of each end securely.
- ④ While charging, the LED light is RED.



5. BASIC OPERATION

1) Powering On/Off

To power on the radio,hold down the [Power on] key for 3 seconds, Green light will be on.

To power off the radio,hold down the [Power on] key for 3 seconds, When you see a message "Power off ?" on the screen,select "Shut down".

2) Adjusting Volume

To increase the volume,press the [volume +] key on the left face of the radio ;

To decrease it, press the [volume -] key.

3) Individual Call

① Initiating Individual Call

In the standby interface, press [Menu] → [Group Member] to select contact.

Press the [Confirm] key to select Initiate Individual Call,You will see a message "Make individual call".

Press the [PTT key] to start a Individual Call.

② Ending Individual Call

During an individual call to select contact ,press the [Confirm] key to ending individual call, You will see a message"End individual call".

After entering individual-call mode,if you do not press the PTT key within 30 seconds,the radio will quit this mode.

4) Group Call

① Initiating Group Call

Under group call mode,you can call the members of a group by pressing the [PTTkey] ,If there is no member online,you will hear a voice prompt "No user online ",and the transmission will be terminated.

② Switching Groups

In standby interface,you can swithc to groups by either of the following methods.

● Press the [Up key] or [Down key]

● Press the Menu key, select Group List and then a group,and press the [Confirm] key.

5) Receiving a Call

By switching to a group (set through the UniPTT APP or the newwork management system),the radio can receive an individual call or a group call from the group and output voice.

Note :

The default call time of all types of calls is 60 seconds,A call is terminated automatically after this time is up,so as to release the floor.

6) Low-Power Alert

When the remaining battery of the radio is below 5%, you will be hear the Voice alert "Low power" at a certain interval.Please charge the battery as soon as possible.

6. SETTING

6.1 【Key tone】

In the standby interface,press [Menu] → [Setting] → [Switch Setting] → [Key tone] , press [Confirm] key to turn it on/off.

6.2 【Screen lock】

In the standby interface,press [Menu] → [Setting] → [Switch Setting] → [Screen lock] , press [Confirm] key to turn it on/off.

6.3 【Voice Broadcast】

The radio is missing menu items.

6.4 【Brightness】

In the standby interface,press [Menu] → [Setting] → [General Setting] → [Brightness] ,

Press [Up key] or [Down key] to set the brightness.

6.5 【Screen timeout】

In the standby interface,press [Menu] → [Setting] → [General Setting] → [Screen timeout] ,

Press [Up key] or [Down key] to set the screen timeout.

6.6 【Call tones】

In the standby interface,press [Menu] → [Setting] → [General Setting] → [Call tones] ,

Press [Up key] or [Down key] to set the Tx Start,Tx End, Rx Start,Rx End respectively

6.7 【Mic gain】

In the standby interface,press [Menu] → [Setting] → [General Setting] → [Mic gain] ,

Press [Up key] or [Down key] to set the Mic gain .

6.8 【Language】

In the standby interface,press [Menu] → [Setting] → [General Setting] → [Language] ,

Press [Up key] or [Down key] to select Chinese and English

7. Adding the Radio

- 1) Add device terminals using the UniPTT APP or network management platform.
- 2) Add device terminals to the UniPTT APP.
Power on the radio, and a QR code will be displayed on the screen.
Scan the code using a cell phone to download the UniPTT App.
Register for a UniPTT account, and then log in to the app with the account.
Run the app, and scan the QR code bindig device.

8. LED Indicator

Indicator State	Radio State
Red light on	1. SIM card uninstalled or improperly installed (with voice prompt "No SIM card") 2. Charging 3. Transmitting
Green light on	1. In individual/group call 2. Charging finished
Red light flashing fast	1. Network registration fails (with voice prompt "Network registration failed") 2. Low battery (with voice prompt "Low Power, please charge the battery")
Green light flashing slowly	Network registration succeeded, Enter standby state
Yellow light on	1. Individual-call dwelled 2. Radio not configured on the server 3. Radio expired
Yellow light flashing fast	Network registration is progress Logging in to UniPTT or NMS
Idle	Power off

9. TROUBLESHOOTING GUIDE

Troubleshooting	Solution
Power-on Failed	1. The battery is used up Solution :Charge the battery or replace it with a new one 2. Power switch is faulty Solution :Get it repaired at the specified service station
Volume Too Low	1. Speak too far from the microphone Solution :Keep a distance of 3-10cm 2. Wrong volume setting Solution :Turn up the volume
PTT Failed	1. The SIM card is expired Solution :Refill or replace it 2. Incorrect group setting Solution :Choose a correct group and try again 3. The device is expired Solution :Renew it

1. 概述

1.1【概述】

4G 公網對講機實現全球語音通話，語音清晰宏量，突破通話距離的限制。

1.2【功能描述】

- ◇ Linux 操作系統
- ◇ 支援 GSM/WCDMA/LTE 網絡
- ◇ 全球通話和即時響應

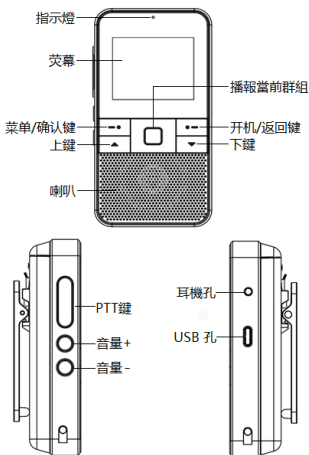
1.3【配件】

- ◇ 電源適配器和充電線
- ◇ 鋰離子電池
- ◇ 皮帶夾
- ◇ 操作說明書

1.4【可选功能】

- ◇ 耳機麥克風

2. 控制鍵及顯示說明



3. 安裝配件

1) 拆卸電池蓋

- ① 將電池蓋上方的電池推扣向右滑到左邊
- ② 將電池蓋向下推動，聽到“啪”的聲音
- ③ 直接將電池蓋揭開



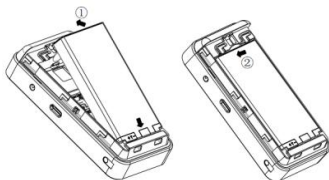
2) 安裝 SIM 卡

- ① 向前方推動 SIM 卡蓋。
- ② 向上方翻開 SIM 卡蓋，放入 SIM 卡。
- ③ 將 SIM 卡向下方蓋回來，再向下方推動 SIM 卡蓋扣緊。



3) 安裝電池

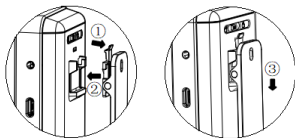
- ① 裝配電池，將電池有“+”、“-”極標識一頭對準主機下端左右兩側的扣位處，再將電池上端壓進電池倉內。
- ② 聽到“啪”的聲音表示電池裝配到位。
- ③ 將電池蓋蓋回主機。



3. 安裝配件

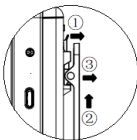
4) 安裝皮帶夾

- ① 將皮帶夾支架壓平。
- ② 將圖中主機電池蓋上凸起筋比特對裝皮帶夾支架上的缺口槽位
- ③ 向下方推動皮帶夾，聽到“啪”的聲音後，皮帶夾裝配到位。



5) 拆卸皮帶夾

- ① 將皮帶夾支架上的彈扣向上提，使彈扣脫出槽位
- ② 向上方推動皮帶夾，使皮帶夾滑出電池蓋上面的槽位
- ③ 取出皮帶夾。



4. 電池充電

- ① 將電源適配器插入電源插座（電源適配器 5V/2A）。
- ② 將 USB 充電線與電源適配器和對講機 TYPE-C 的插口連接。
- ③ 確保所有連接點正確穩固連接。
- ④ 充電時，LED 亮紅燈。



5. 基本操作

1) 開機和關機

關機狀態下，長按鍵盤右上的『开机』鍵 3 秒，綠燈亮即可開機。開機狀態下，長按鍵盤右上的『开机』鍵 3 秒，螢幕提示“是否确认关机”，選擇“关机”即可關機。

2) 調節音量

開機狀態下，按機器左側的『音量+』鍵可增大音量，按『音量-』鍵减小音量。

3) 單呼

① 創建單呼

在待機介面，進入『菜单』→『群组成员』選擇通話人員，按『确认』鍵“建立单呼成功”語音提示進入單呼模式，按『PTT』鍵可進行單呼通話。

② 解除單呼

選擇單呼狀態下連絡人，按『确认』鍵“解散单呼成功”語音提示結束單呼模式。

進入單呼模式後，超過 30 秒（默認）沒有按『PTT 鍵』鍵通話或接收通話，自動結束單呼模式。

4) 組呼

① 發起呼叫

在組呼狀態下，按『PTT 鍵』則可向當前群組內連絡人發起呼叫，若無成員線上，則語音提示“當前沒有成員線上”並中斷發射請求。（群組需要通過 UniPTT APP 或網管平臺設定）

② 切換群組

在待機介面，按『上鍵』『下鍵』直接切換群組或按『菜单』鍵進入“菜单”→“组列表”選擇通話群組，按『上鍵』『下鍵』鍵選擇群組，按『确认』鍵確認。

5) 接收呼叫

當成功登入到群組（群組在 UniPTT APP 或網管平臺設定）時，接收到該群組上呼叫本機的單呼、組呼、無線數據終端將輸出該群組上的話音。

注意：

所有呼叫類型，系統默認設置通許時長限制為 60 秒，若在通話限制時長內通話未結束，系統將自動停止本次通話防止過長時間佔用通話權。

6) 低電量提示

當電量低於 5%時，會以一定時間間隔進行語音提示“電量低，請充電”，此時應及時進行充電。

6. 設置

6.1【按鍵音】

在待機介面，進入『菜單』→『設定』→『開關設置』→『按鍵音』，按『確認』鍵開啟或關閉按鍵音。

6.2【屏鎖】

在待機介面，進入『菜單』→『設定』→『開關設置』→『屏鎖』，按『確認』鍵開啟或關閉屏鎖。

6.3【語音播報】

在待機介面，進入『菜單』→『設定』→『開關設置』→『語音播報』，按『確認』鍵開啟或關閉語音播報。

6.4【亮度調節】

在待機介面，進入『菜單』→『設定』→『常規設置』→『亮度調節』按『上鍵』『下鍵』鍵設定亮度。

6.5【熄屏時間】

在待機介面，進入『菜單』→『設定』→『常規設置』→『熄屏時間』按『上鍵』『下鍵』鍵選擇熄屏時間。

6.6【呼叫提示音】

在待機介面，進入『菜單』→『設定』→『常規設置』→『呼叫提示音』按『上鍵』『下鍵』鍵可分別設定呼出開始、呼出結束、呼入開始、呼入結束四種呼叫提示音。

6.7【麥克風增益】

在待機介面，進入『菜單』→『設定』→『常規設置』→『麥克風增益』按『上鍵』『下鍵』鍵選擇麥克風增益項。

6.8【語言】

在待機介面，進入『菜單』→『設定』→『常規設置』→『語言』按『上鍵』『下鍵』鍵選擇簡體中文和英文。

7. 終端添加方式

1) 手機下載 UniPTT APP 或網管平臺添加，兩種方式只能選一種。

2) 手機下載 UniPTT APP 添加終端。

長按開機鍵開機，設備螢幕將自動顯示二維碼

用手機掃一掃設備二維碼，下載 UniPTT APP

注册登入 UniPTT APP

用 UniPTT APP 掃描設備二維碼綁定設備

8. LED 指示燈

指示燈狀態	終端工作狀態
紅燈常亮	1. 未裝 SIM 卡或者 SIM 卡安裝錯誤，語音提示“未插入 SIM 卡” 2. 充電中 3. 發射通話中
綠燈常亮	1. 接收通話在（單呼/組呼）狀態 2. 充電完成
紅燈快閃	1. 終端無法註冊到無線網路，語音提示“網絡註冊失敗” 2. 低電狀態，語音提示“電量低，請充電”
綠燈慢閃	已成功登入，進入待機狀態
黃燈常亮	1. 單呼守候狀態 2. 未在服務器中配真該設備 3. 終端已經超過可使用期限
黃燈快閃	注網、登錄中
無指示	關機狀態

9. 故障排除指南

問題	解決方案
不開機	1. 電池沒電：請在專用充電器上充滿電再試或更換新電池 2. 按鍵開關不良或其它問題：請到指定維修站修理
對講機聲音小	1. 說話時離機器的麥克風太遠：最佳距離為 3-10cm 2. 音量設定不對：增大音量
不能對講	1. SIM 卡過期，請充值或更換 SIM 卡 2. 默認呼叫的群組不正確：請選擇正確的群組再試 3. 終端使用期限到期，再續期後才能使用

TECHNICAL SPECIFICATIONS

Working voltage		DC 3.3V~4.2V
Battery capacity		3000mAh
Antenna impedance		50Ω
Size(H ×W× D)		106×54×26mm
Weight Incl. battery		150g
Network	Radio method	GSM、WCDMA、CDMA、TD-SCDMA、 LTE /TD
	Frequency	GSM : Band2/3/8 WCDMA : Band1/5/8 CDMA : Evdo Rev.A 800MHz TDD-LTE : Band38/39/40/41 FDD-LTE : Band1/3/5/8



[http:// www.cps-telecom.com](http://www.cps-telecom.com)

CPS is the registered trademark of CPS Telecom Limited, Hong Kong

©2023 CPS Telecom Limited

CPS20230318920V.1.2